

A10B BI-LEVEL FLOAT CONTROL VALVE

The bi-level float control valve is for open or close at two different water levels whenever the float touch the lower stop, It starts to flow into tank. as the water level rises, the float will come up and reaches high water level stop and the counterweight will drop and ceases water flow into the tank.

Features:

- Hydraulically operated, accurate and repeatable level control.
- Double stop on the float rod up and down, and the float touches the stop whenever it reaches high or low water level.
- Easy service for dis- assembly internals without removal from the line
- Nylon reinforced diaphragm for strength and sensitivity
- Corrosion resistant stainless seat and stem
- Float pilot features easy operation and accurate level control
- Top and bottom guided stem and diaphragm assembly for long term life and reliable performance
- All iron components are fusion epoxy bonded for corrosion resistance
- Various pilots and accessories available for configuration into many different applications
- Meet standards BS EN 1074-5, ISO 5208, BS EN 12266-1, BS EN 558-1, BS EN

Field Service:

Suitable for tank, reservoir, intake water flow.

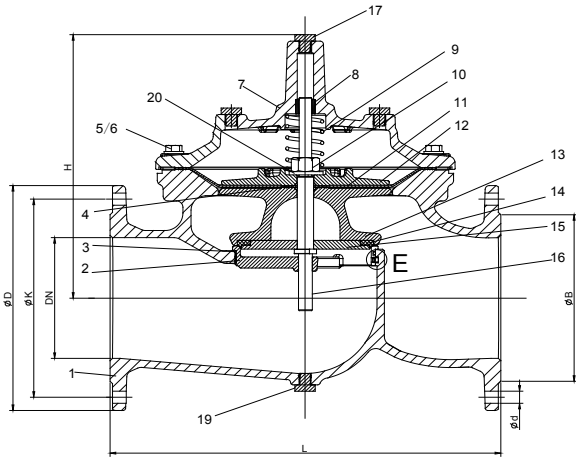


Technical Data:

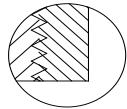
Size Range: DN50~DN800mm
Pressure Ratings: 1.0Mpa; 1.6Mpa; 2.5Mpa
Working Temperature:-10°C- 80°C
Suitable Media: Clean water
End connection: PN 10/ PN 16/PN 25
Consult Factory for other applications

A900-Main Valve (Full Bore)

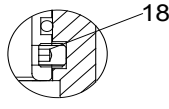
DN50-DN350



DN50-150



DN200-350



Parts List

No.	Description	Material	Standard
1	Body	Ductile Iron	GJS 500-7
2	Seat	Stainless Steel	AISI 304
3	O-ring	Rubber	NBR
4	O-ring	Rubber	NBR
5	Bolt	Stainless Steel	A2
6	Washer	Stainless Steel	A2
7	Bonnet	Ductile Iron	GJS 500-7
8	Bush	Bronze	C61900
9	Spring	Stainless Steel	AISI 304
10	Caulking Nut	Stainless Steel	A4
11	Diaphragm	Nylon Reinforced Rubber	EPDM +Nylon Fabric
12	Fixing holder	Ductile Iron	GJS 500-7
13	Disc Holder	Ductile Iron	GJS 500-7
14	Seal	Rubber	EPDM
15	Seat Retainer	Stainless Steel	AISI 304
16	Stem	Stainless Steel	AISI 304
17	Plug	Stainless Steel	AISI 304
18	Screw	Stainless Steel	A2
19	Plug	Stainless Steel	AISI 304
20	Washer	Stainless Steel	A2

Dimension:

Unit: mm

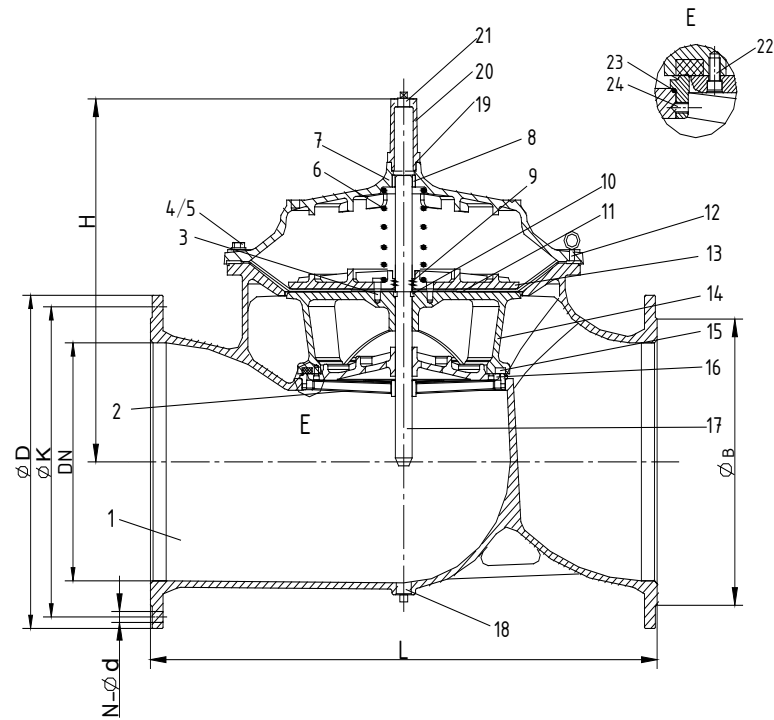
DN	Model Code	L	ØD			ØK			H	N-Ød			ØB		
			PN10	PN16	PN25	PN10	PN16	PN25		PN10	PN16	PN25	PN10	PN16	PN25
50	A900-0050	230	165	165	165	125	125	125	177	4-Ø19	4-Ø19	4-Ø19	Ø99	Ø99	Ø99
65	A900-0065	290	185	185	185	145	145	145	202	4-Ø19	4-Ø19	8-Ø19	Ø118	Ø118	Ø118
80	A900-0080	310	200	200	200	160	160	160	219	8-Ø19	8-Ø19	8-Ø19	Ø132	Ø132	Ø132
100	A900-0100	350	220	220	235	180	180	190	243	8-Ø19	8-Ø19	8-Ø23	Ø156	Ø156	Ø156
125	A900-0125	400	250	250	270	210	210	220	243	8-Ø19	8-Ø19	8-Ø28	Ø156	Ø156	Ø156
150	A900-0150	480	285	285	300	240	240	250	333	8-Ø23	8-Ø23	8-Ø28	Ø211	Ø211	Ø211
200	A900-0200	600	340	340	360	295	295	310	428	8-Ø23	12-Ø23	12-Ø28	Ø266	Ø266	Ø274
250	A900-0250	730	405	405	425	350	355	370	478	12-Ø23	12-Ø28	12-Ø31	Ø319	Ø319	Ø330
300	A900-0300	850	460	460	485	400	410	430	538	12-Ø23	12-Ø28	16-Ø31	Ø370	Ø370	Ø389
350	A900-0350	980	520	520	555	460	470	490	550	16-Ø23	16-Ø28	16-Ø34	Ø429	Ø429	Ø448

NOTE: *DN125 use same internal as DN100

A900-Main Valve (Full Bore) DN400-DN800

Parts List

No.	Description	Material	Standard
1	Body	Ductile Iron	GJS 500-7
2	Seat	Stainless Steel	AISI 304
3	Screw	Stainless Steel	A2
4	Screw	Stainless Steel	A2
5	Screw	Stainless Steel	A2
6	Spring	Stainless Steel	AISI 304
7	Bonnet	Ductile Iron	GJS 500-7
8	Bush	Bronze	C61900
9	O-ring	Rubber	NBR
10	Fix Washer	Bronze	C61900
11	Diaphragm	Nylon Reinforced Rubber	EPDM +Nylon Fabric
12	Eye Bolts	Carbon Steel	1040
13	Fixing Holder	Ductile Iron	GJS 500-7
14	Disc Holder	Ductile Iron	GJS 500-7
15	Seal	Rubber	EPDM
16	Seal Retainer	Ductile Iron	GJS 500-7
17	Stem	Stainless Steel	AISI 304
18	Plug	Stainless Steel	AISI 304
19	O-ring	Rubber	NBR
20	Cap	Ductile Iron	GJS 500-7
21	Plug	Stainless Steel	AISI 304
22	Screw	Stainless Steel	A2
23	O-ring	Rubber	NBR
24	Screw	Stainless Steel	A2



Dimension:

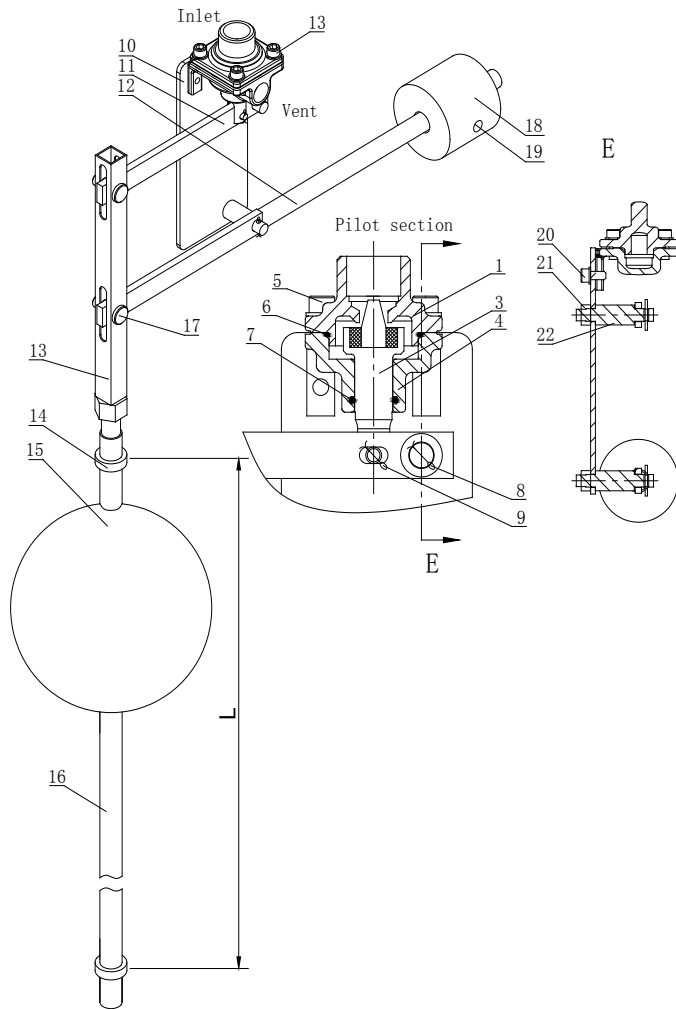
Unit: mm

DN	Model Code	L	H	ØD			ØK			N-Ød			ØB		
				PN10	PN16	PN25	PN10	PN16	PN25	PN10	PN16	PN25	PN10	PN16	PN25
400	A900-0400	1100	670	580	580	620	515	525	550	16-Ø28	16-Ø31	16-Ø37	480	480	503
450	A900-0450	1200	700	640	640	670	565	585	600	20-Ø28	20-Ø31	20-Ø37	530	548	548
500	A900-0500	1250	790	715	715	730	620	650	660	20-Ø28	20-Ø34	20-Ø37	582	609	609
600	A900-0600	1450	930	840	840	845	725	770	770	20-Ø31	20-Ø37	20-Ø40	682	720	720
700	A900-0700	1650	950	910	910	960	840	840	875	24-Ø31	24-Ø37	24-Ø43	682	720	720
800	A900-0800	1850	1260	1025	1025	1085	950	950	990	24-Ø34	24-Ø40	24-Ø49	901	901	928

Note: DN700 use same internal as DN600 .

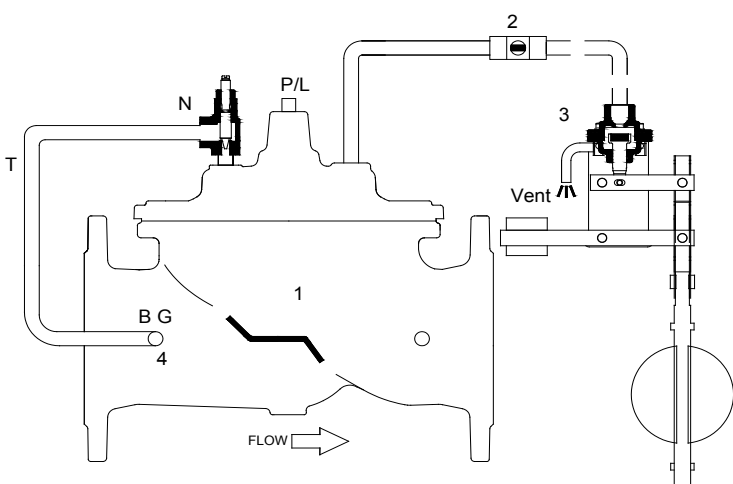
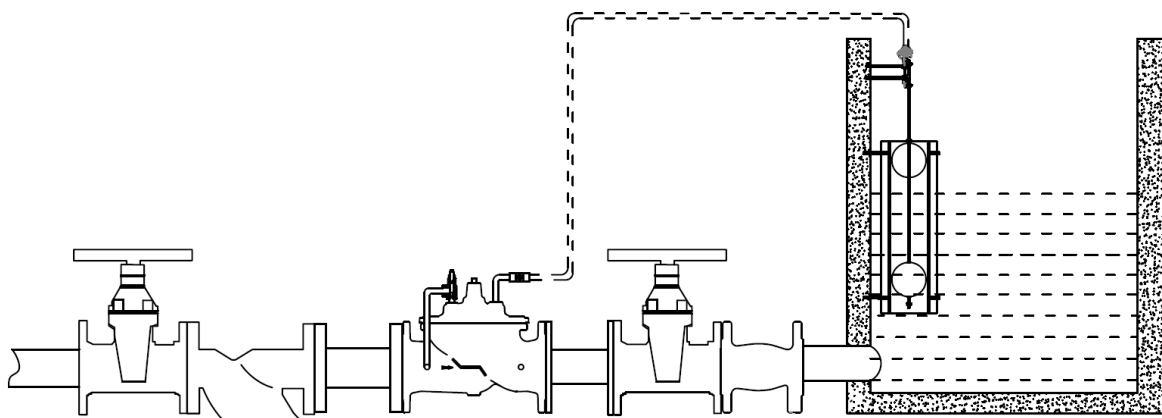
P10B-Bi-Level Float Pilot

Part list & Material



No.	Description	Material	Standard
1	Bonnet	Stainless Steel	AISI 304
2	Seal	Rubber	EPDM
3	Stem	Stainless Steel	AISI 304
4	Body	Stainless Steel	AISI 304
5	Bolt +Washer	Stainless Steel	A2
6	O-Ring	Rubber	NBR
7	O-Ring	Rubber	NBR
8	Split pin	Stainless Steel	A2
9	Split pin	Stainless Steel	A2
10	Plate	Stainless Steel	AISI 304
11	Bar 1	Stainless Steel	AISI 304
12	Bar 2	Stainless Steel	AISI 304
13	Up rod	Stainless Steel	AISI 304
14	Stop collar	Stainless Steel	AISI 304
15	Float	Stainless Steel	AISI 304
16	Low rod	Stainless Steel	AISI 304
17	Pin roll & split pin	Stainless Steel	A2
18	Weight	Stainless Steel	AISI 304
19	Set Screw	Stainless Steel	A2
20	Nut+washer	Stainless Steel	A2
21	Nut	Stainless Steel	A2
22	Roller	Stainless Steel	AISI 304

A10B Bi-level Float Control Valve

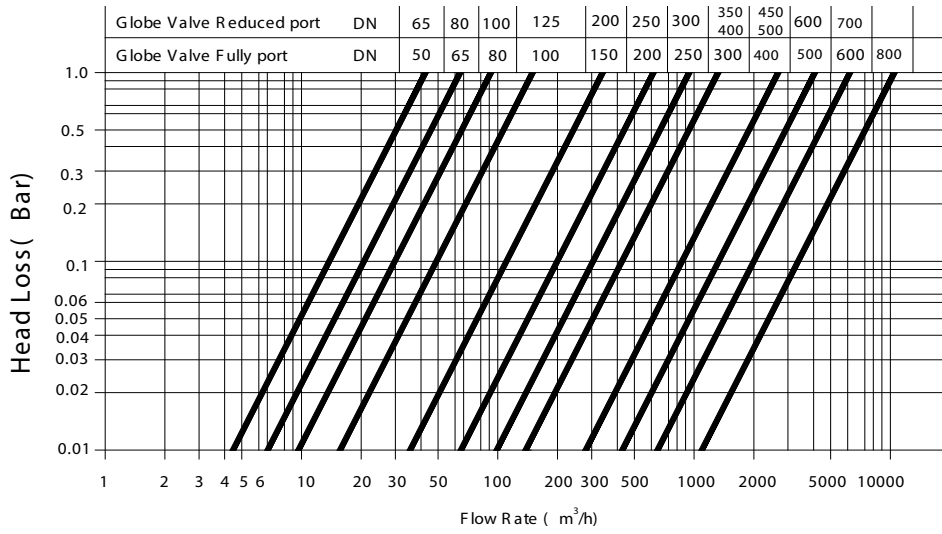


- 1. Main Valve
- 2. Ball Valve
- 3. P10B Float Pilot
- 4. Strainerilot
- T. Tube

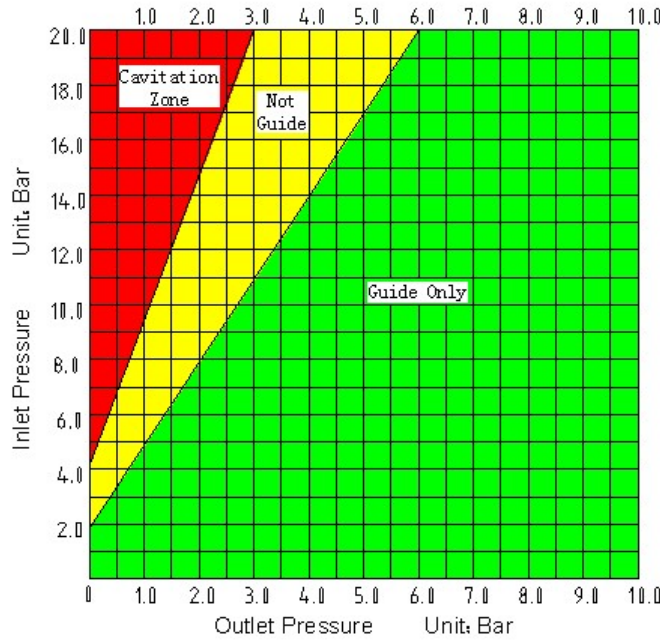


- 1. On-off control
- 2. Close tight when water level reaches high water level-upper stop
- 3. Start to open when water level drop to a pre-set level-lower stop
- 4. Control water level in the tank and can be adjusted thru the rod stop

Head Loss Curve

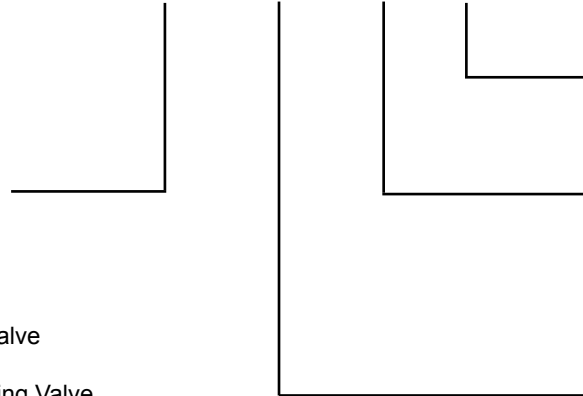


Cavitation



Ordering Code

XXXX-0200-16-YYY



Model:

- A100: Remote Float Valve
- A200: Pressure Reducing Valve
- A300: Slow Control Check Valve
- A400: Flow Control Valve
- A500: Pressure Relief/Sustaining Valve
- A600: Electrical Control Valve
- A800: Pressure Differential Sustaining Valve
- A900: Main Valve
- R900: Reduced bore main valve

YYY: Special Code
Please Consult Factory

Pressure Rating:

- 10: PN10
- 16: PN16
- 25: PN25
- A1: ANSI 125 F/F
- A5: ANSI 150 R/F

Size:

- 0080: 80 mm
- 0200: 200 mm